

EB-105EX

> SAVIN EB-105EX CONTROLLER



# Savin EB-105EX Controller



**savin**<sup>®</sup>

## Savin EB-105EX Controller

# Superior Performance At An Affordable Price.



### Savin EB-105EX Controller

Built to provide superior performance at an affordable price, the new EB-105EX is the first black and white external type Fiery controller from Savin. The unique design offers enhanced PostScript printing and proven job management performance, reflecting what you expect in a Fiery based controller.

### Productivity With Performance

The EB-105EX's fast processing speed maximizes the performance of the Savin 4090 and 40105 Systems. A high performance CPU and ample Hard Disk Drive optimizes productivity with all different types of jobs:

- Intel Pentium III 1GHz Processor
- 256 MB of SDRAM
- 80GB HDD (40GB x 2 IDE w/RAID)
- Continuous Print/Rip While Print®

# Print Job Management.

## Fiery Job Management Utilities

With a full suite of network and workflow utilities, the EB-105EX gives users of all knowledge levels an easy-to-use interface with the ability to produce their documents quickly.

**Command WorkStation™ 4** (standard) provides easy job management for one Fiery controlled device or several. For Mac Users, Command WorkStation™ LE (Limited Edition) and Fiery Spooler provide simple print job management utilities.

### Active Jobs

- Displays each job on the selected Fiery
- Select/manage multiple Fierys
- Displays job status with job ticket information

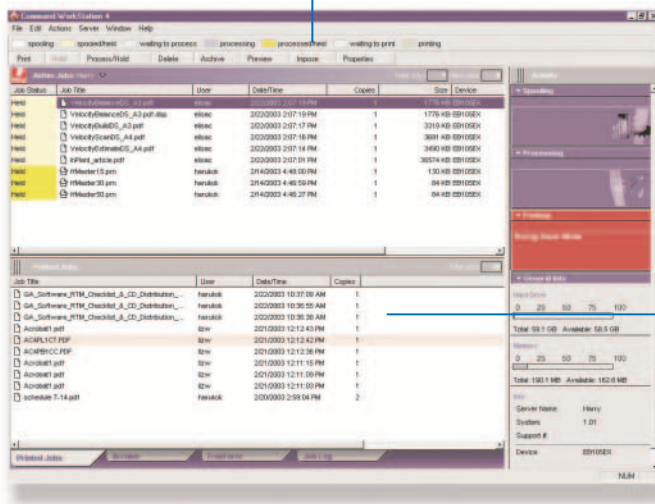
### Job Status Helper

- Defines each job status by 7 colored flags on both the Active Jobs window and the Activity Monitor window

### Activity Monitor

Displays a summary of activities on the selected Fiery such as job status and error conditions in the following areas:

- Spooling
- Processing (RIPping)
- Printing
- General Information



Command WorkStation™ 4 Screen

### Job Window

The following information can be selected by tab:

- Printed Jobs
- Archive
- FreeForm™
- Job Log

**DocBuilderPro™ Version 1.5** (option) provides powerful and affordable imposition technology for anyone who publishes. For novices, as well as pre-press professionals, the easy-to-use “what you see is what you get” graphic user interface simplifies the creation of imposed print jobs, eliminating the need for third party software.

**Fiery WebTools™** provides users with a powerful suite of web utilities, which expand desktop printing capabilities via the Internet or Intranet, enabling remote users with any Java-enabled browser to retrieve printer status information and change job parameters directly from their desktops.

**Fiery Downloader** utility allows users to quickly download fonts, as well as PostScript and PCL files directly to the EB-105EX controller to print without application software, which accelerates the printing process.



Fiery WebTools Screen

- Provides access to print drivers and PPDs via Web browser
- Saves time eliminating the need for software to install printer files & drivers
- Quick access for downloading from any location

# Scanning And PostScript Printing.

## Scanning Applications

The EB-105EX allows scanned documents to be retrieved via either the Fiery WebTools™ utility, the local Fiery Interface or the TWAIN plug-in. Fiery Scan consists of two components: a server module that resides on the Fiery and manages the scans and a TWAIN plug-in module for use with compatible applications to allow remote retrieval of scan files from the Fiery.

- Remote Retrieval of Scanned Files
- Local Scan Initiation
- Ability to Distribute Scanned Data via E-mail
- Support for Merging Scanned Files into Workflow Using Command WorkStation™ 4
- Scan to FTP

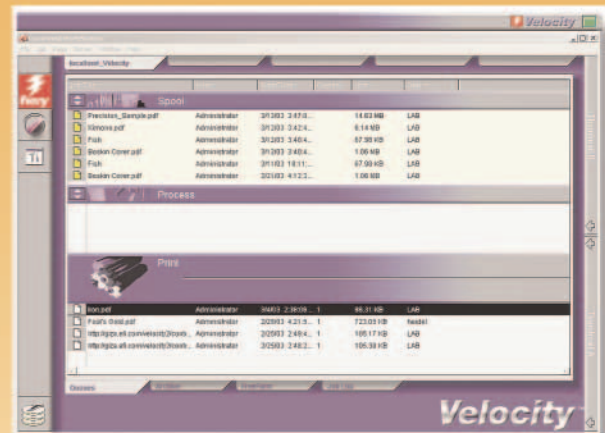
## Enhanced PostScript Printing Capabilities

Designed with professional workflow in mind, the PostScript print driver offers the following productivity enhancements:

- Various imposition settings (booklet, double, speed, perfect)
- Reduction imposition mode (*New!*)
- Creep adjustment
- Tab shift printing
- Custom paper size
- Chapter separation (mixed media selection from different paper trays)
- Chapter stapling (*New!*)
- Fit to Print and Full Bleed printing (edge to edge printing)
- Image shifting (centering, cornering)
- Booklet finisher support (including the SR90 Bookletmaker)

## Velocity™ Workflow Management

For more complex document handling needs, the EB-105EX can also be included as part of Fiery's Velocity™ Workflow Solution, which can manage several printers at a time. Velocity™ offers an advanced workflow management tool with a consistent look and feel that is powerful, yet simple to use. Velocity™ provides users with the ability to increase throughput, boost staff productivity and decrease overall operating costs.

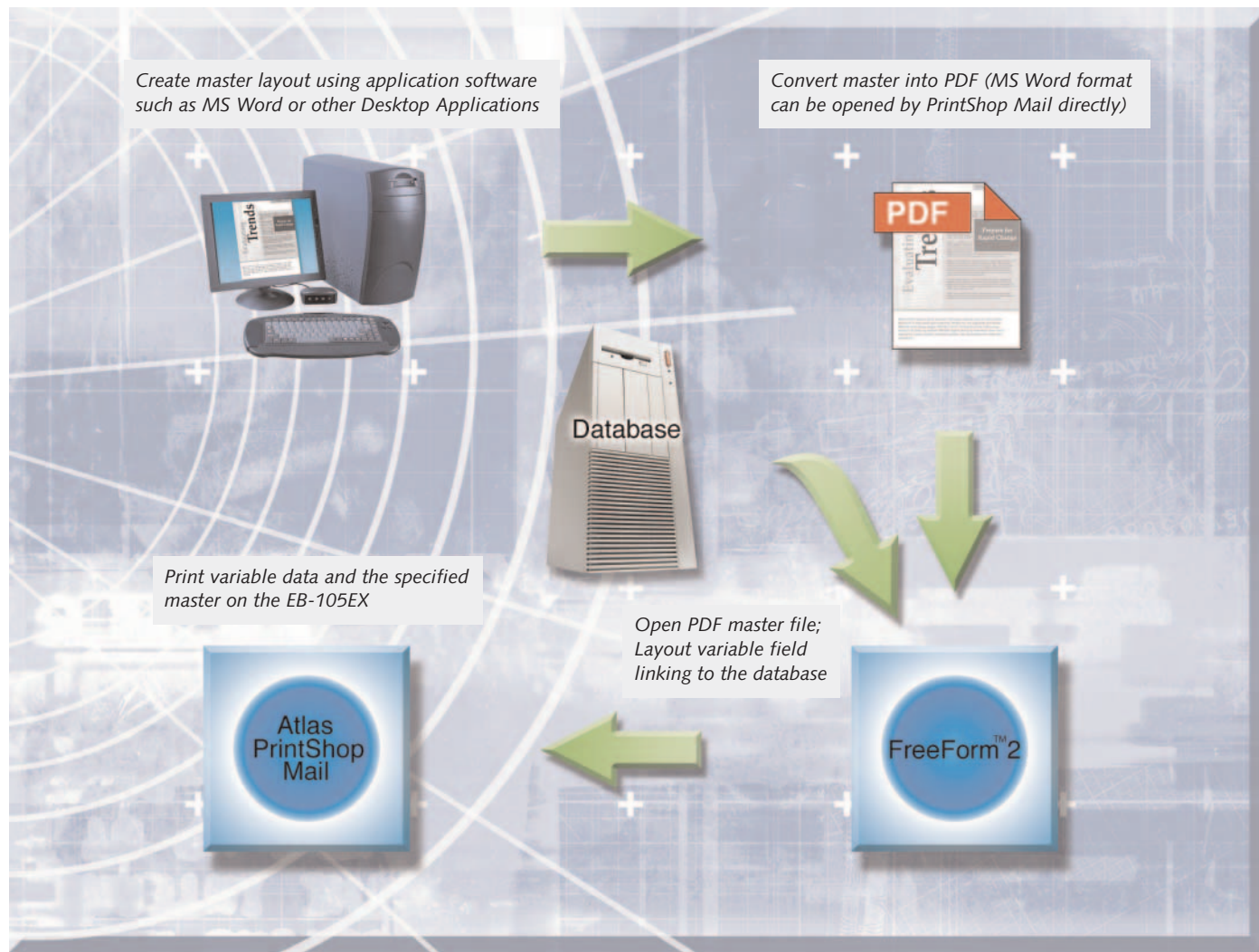


Velocity Screen

## Velocity™ Consists Of 4 Optional Components

- Velocity Balance™
- Velocity Build™
- Velocity Scan™
- Velocity Estimate™

# New Variable Data Capabilities.



**Fiery FreeForm™** enables users to incorporate simple variable data mail merge types of applications and print them with minimum processing. It is an effective variable data tool for users that require:

- Few jobs – printed repeatedly
- Custom applications
- Predictable page based “pre-printed shell” concept style printing
- Simple design for no more than 2 layers of variability
- No specialized application
- An entry-level variable data tool

**Atlas PrintShop Mail-Fiery Version** (option) provides Mac and PC users with more robust variable data application processing capabilities. Provides more experienced users with the ability to have a utility that is:

- Designed for specialized applications with a more integrated approach.
- More flexible for jobs consisting of pages that are less predictable in variable content, providing more variety.
- Perfect for users with growing variable data application needs.
- A requirement for proofing final print layout with variables and master shown on screen.

# Savin EB-105EX Controller

## System Requirements and Specifications



### CONTROLLER FEATURES & SPECIFICATIONS

<b>Controller Type</b>	External
<b>Maximum Continuous Print Speed</b>	90-ppm/105-ppm
<b>CPU</b>	Pentium III 1GHz
<b>Interface</b>	Ethernet 10/100BaseT
<b>Network Protocol</b>	TCP/IP, IPX/SPX, EtherTalk (auto switching)
<b>Page Description Languages (PDL) Supported</b>	Adobe PostScript3, PCL5e/6
<b>Maximum Print Resolution</b>	PostScript3: 1200 dpi PCL6: 1200 dpi PCL5e: 600 dpi
<b>Scan Resolution</b>	600 dpi
<b>Supported Operating Systems (OS)</b>	Windows 98/Me/NT/2000/XP and Mac OS9/OSX
<b>Memory</b>	256 MB standard and maximum
<b>Hard Disk Drive</b>	80GB (40GB x 2 IDE w/RAID)
<b>Utility</b>	Fiery WebTools™ Fiery Downloader Fiery Spooler Command WorkStation™ 4 Fiery Scan/Fiery Remote Scan Fiery FreeForm™ Fiery FreeForm™ 2
<b>Options</b>	DocBuilderPro™ Version 1.5 bundled with PitStop software Atlas PrintShop Mail (Fiery Version) Velocity Balance™ Velocity Build™ Velocity Estimate™ Velocity Scan™

### FIERY SCAN FEATURES & SPECIFICATIONS

<b>Functions</b>	Fiery LCD Scan (Scan to E-mail/Scan to HDD) Fiery Scan TWAIN Plug-in Fiery Remote Scan TWAIN Plug-in
<b>Fiery LCD Scan Supports</b>	Scan to E-mail Scan to Mailbox (retrieve via WebScan) Scan to Hold Queue (retrieve via Command WorkStation™ 4) Scan to FTP
<b>Fiery Remote Scan TWAIN Plug-in</b>	Scan file destinations: E-mail, Mailbox, Hold Queue, and File (PDF, TIFF). Using Fiery Remote Scan, "Scan to File" directly pulls the scanned file to your local client PC.

For more information contact  
your authorized Savin dealer.



**savin**®



Savin Corporation Stamford, Connecticut 06904 ©2003 Savin Corporation. SAVIN® is a registered trademark of Savin Corporation. All other trademarks are the property of their respective owners. Product specifications subject to change without notice.

Printed in U.S.A. on recycled paper. (S1858) 15M 8/03