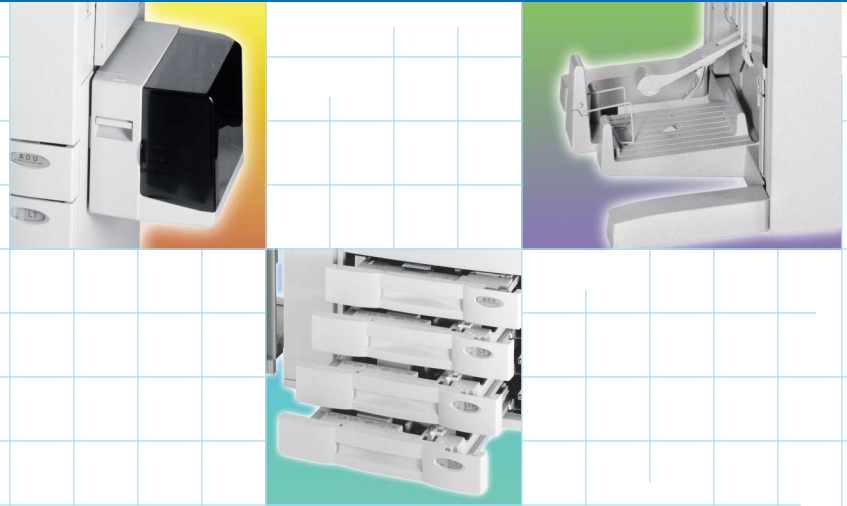


External Print Server/ Controller



EFI Fiery® E-850



An external print server/controller that provides robust workflow tools and capabilities for high-volume environments.

When you run a print shop or Central Reproduction Department, there are two criteria you must satisfy: quality and quantity. With the **EFI Fiery® E-850** print controller attached to your **Savin SDC531**, you'll always be able to deliver both. Now you have all the tools you need to set up jobs and the throughput to keep your Savin SDC531 running at full speed.

The E-850 is an external print server built on EFI Fiery® technology that supports all your network protocols and operating systems. Not only does it perform load balancing for maximum throughput, Command WorkStation™ 4 enables you to control the job queue at all times – for maximum responsiveness. And, you can assign drivers and settings to individual users to ensure that every job prints correctly the first time.

EFI Fiery® E-850

With the E-850, all your spot colors will be right on target, and EFI's ColorWise Pro Tools 3.0 utility makes it a snap – whether the image files are in RGB, CMYK, CIE Lab, or even PANTONE® colors. Powerful ICC Profile Manager software enables you to create, modify and apply custom profiles, and automatically assign them to users and jobs. Automatic setup ensures your Savin SDC531 is calibrated to your standards every time it is turned on.

Fiery DocBuilder Pro 2 gives you the tools to set up and finish any job – whether it's a 50-page proposal or a Z-fold brochure. You can mix and match different-size pages and files – created on different platforms – to enable collaboration among departments and users. Not only can you preview the job prior to RIPping, you can make last-minute corrections to meet deadlines!

One-to-one marketing and customized materials can be produced quickly and easily using the E-850. It RIPs and caches static text and image items to maximize throughput, and supports the PPML industry standard along with other popular variable data printing applications, so you can accept files from a variety of sources.

Options

- **Graphic Arts Package** is an essential option for printers and graphic services providers. Use hot folders to fully automate your workflow and increase throughput – including automatic trapping. Apply halftone screening to predict moiré and see exactly how jobs will image on film and plate. Combine legacy files with PostScript and PDF with the TIFF/IT and DCS 2.0 filters.
- **Color Profiler** enables you to implement closed-loop color management for jobs where color accuracy is essential. Using a spectrometer to measure the desired colors – whether on a press sheet or another printer – Color Profiler creates ICC-compliant profiles that automatically calibrate output from the Savin SDC531 to match. You can also use it to calibrate CRT and LCD monitors to match the Savin SDC531.

Standard

- **ColorWise Pro Tools 3.0** provides a full range of color management tools for novices and experts alike, including modules for setup, calibration and for handling a variety of file formats and color spaces.
- **WebTools** gives you the freedom to control your Savin SDC531 from any workstation connected to the Internet. From setting output parameters to downloading files and monitoring job status, WebTools lets you control the SDC531 from virtually anywhere.
- **NetWise** automatically integrates the E-850 into any network environment, with auto-switching between protocols and page description languages.
- **Fiery Downloader** accelerates production by eliminating the need to launch native applications and spool files on host workstations. Now you can download PDF, PostScript and EPS files directly to the E-850.
- **Fiery Scan** enables you to digitize photos, graphics and schematics for use in desktop publishing applications, as well as legacy documents stored on paper. At 600 dpi and 8 bits/pixel, you can capture vivid detail and the full tonal range. Or, use the ARDF to feed documents and distribute them as e-mail attachments, save them to file folders or post them to FTP file servers.

SYSTEM

Type	External
CPU	2GHz Intel Pentium 4 with custom Video Interface board
RAM (Std./Max.)	256MB/768MB
Hard Disk Drive	60GB
Operating System	Windows XP

PRINTING FEATURES

Resolution	600 x 600 dpi
Gradations	256 (8 bits/pixel)
Page Description Languages	Adobe PostScript 3, PCL 6, PCL 5 and Auto Switching
Fonts	136 Adobe PostScript Type 1 fonts and 81 TrueType/PCL fonts
Capabilities	RIP-while-Print, Continuous Print, Electronic Collation, Reverse Order Printing, RGB Separations, CMYK Quick and Full Simulations, Combined Separations, Black Overprint, Independent RGB, CMYK and Pantone controls, Thumbnail Previews, Job Merging and Editing, and Cut and Stack
Printer Drivers	Windows 9x/Me/NT/2000/XP/Server 2003, Macintosh OS 8.6 – 9.2, OS X 10.1 – 10.2, Classic mode, OS X 10.2.4 or later Native mode Note: Unix workstations must have TCP/IP printing software that conforms with RFC1179 (Berkeley lpd protocol)

SCANNING FEATURES

Resolution	150 dpi, 200 dpi, 300 dpi and 600 dpi
Color Spaces	Color, Grayscale and Black & White
File Formats	TIFF, JPEG and PDF

NETWORKING

Interfaces	10/100BaseTX with RJ-45, 1GbE and IEEE 1284 Parallel Port
Protocols	TCP/IP, Novell IPX/SPX, AppleTalk, Internet Printing Protocol (IPP) and Auto-Switching
Printing Services	Point and Print, SMB, LPD and PAP

UTILITIES

Command WorkStation 4 and 4 LE for Macintosh software, Fiery Driver 2, Fiery WebTools, ColorWise Pro Tools 3.0, Fiery DocBuilder Pro 2, Fiery Remote Scan, Fiery Downloader, Fiery FreeForm 2, Enfocus PitStop and Load Balancing

OPTIONS

Color Profiler	Graphic Arts Package
FACI Kit	Secure Hard Drive
Video I/F Board required for installation of the E-850	

savin

Savin Corporation Stamford, Connecticut 06904 ©2004 Savin Corporation. SAVIN® is a registered trademark of Savin Corporation.

Windows® and Windows® 95/98/Me/NT4.0/2000/XP/Server 2003 are registered trademarks of Microsoft Corporation. Macintosh®, Mac® OS and AppleTalk® are registered trademarks of Apple Computer, Inc. Adobe® and PostScript® are registered trademarks of Adobe Systems, Inc. PCL® is a registered trademark of Hewlett-Packard Company. All other trademarks are the property of their respective owners. Product specifications subject to change without notice.

Printed in U.S.A. on recycled paper. (S2005) 15M 8/04

