

Savin  
4090/40105

*high volume* > DIGITAL IMAGING SYSTEMS

**High speed,  
high quality  
production  
solutions.**



Savin 4090/40105



**savin**®

# Sophisticated Production



*Savin 4090 with LCT, Bypass, Booklet Finisher and Cover Interposer.*

## Where Productivity And Profitability Meet

Engineered to meet the rigorous requirements of high-volume production environments – including Central Reproduction Departments, Facilities Management and Print-for-Pay – the Savin 4090 and 40105 are more than up to the challenge.

The 4090/40105 excel at producing virtually any job in the high-volume production environment – from manuals to reports to presentations and more. And, with the 4090/40105, time is always on your side: 90 (4090) and 105 (40105) pages per minute mean you'll never worry about tight deadlines again. Plus, your 4090/40105 run at full system speed when applying advanced finishing functions such as stapling and hole punching.

And no matter how a document was initially created – digital files or hardcopy – the 4090/40105 handle each one with precision and care.

## Where Hardcopy And Electronic Files Work Together

With a maximum storage capacity of 15,000 pages, the Document Server optimizes the print, scan and copy functions of the 4090 and 40105, enabling you to create a competitive print-on-demand model. And, a variety of hardware and software-based capabilities ensure that the document workflow is smooth and steady at all times.

### Document Input

It's a snap to incorporate existing paper-based documents into the digital world. Simply scan hardcopy documents – up to 100 pages at a swift 80 scans per

minute – and send them directly to the Document Server until you're ready to use them. And, send electronic files to the Document Server directly from the desktop – you don't even have to get out of your chair.

### Document Management

It's easy to get the most out of documents stored at the Document Server.

### Advanced Print on Demand Functionality

– Output stored documents from the Document Server when you need them and in the quantity you want them – without re-scanning or re-transmitting. Quickly select stored documents from a list located on the Control Panel. Or access, view and print stored documents directly from the desktop using Web Image Monitor and DeskTopBinder Document Management software.

# Solutions For Demanding High-Volu



## ***Automatic Merging of Scanned***

***Hardcopy and Electronic Files*** – Use Document Server technology to easily merge scanned hardcopy and electronic files into one file. For example, create a winning technical bid that includes MS Word Documents, CAD/CAM drawings, P&L statements and more – just pick the files you want and let the Document Server put your document together.

## ***Secured Printing Environment*** –

Nothing says, “read me now!” like someone else’s documents in the output tray of a shared network device. With the Document Server, that won’t happen. Just assign a PIN Code to your documents and then send them to the Document Server. Your documents won’t print until you enter your PIN – problem solved.

## **Flexible Paper Handling Capabilities**

With a maximum paper capacity of 8,050 sheets from seven sources available at any time, you’ll cruise through even the longest jobs without interruption. Given the large number of paper sources, you’ll also have a great deal of flexibility with regard to output stocks: Paper sizes ranging from Statement to 12” x 18”, paper weights from 16 lb. Bond to 110 lb. Index, and specialty stocks such as tabs, transparencies and labels. Additionally, standard Trayless Duplexing reduces paper and hardcopy filing costs.

## **Versatile Publishing Possibilities**

In addition to specialized media, many jobs in the production environment require specialized features. From a full compliment of digital capabilities –

including Scan Once, Print Many and Automatic Image Rotation – to a variety of advanced publishing capabilities – including Tabs, Covers, Chapters, Paper Designate, Booklet/Magazine Mode and more – the 4090 and 40105 are up to the challenge.

## **Reliable Technology**

The 4090/40105 are built to go an amazing distance between routine maintenance times, so they’re ready to work virtually 365/24/7. Plus a design that features Pipe Frame and Ridge Frame construction at major mainframe and joint locations ensures that the 4090 and 40105 are tough enough to withstand the daily poundings of the production environment.

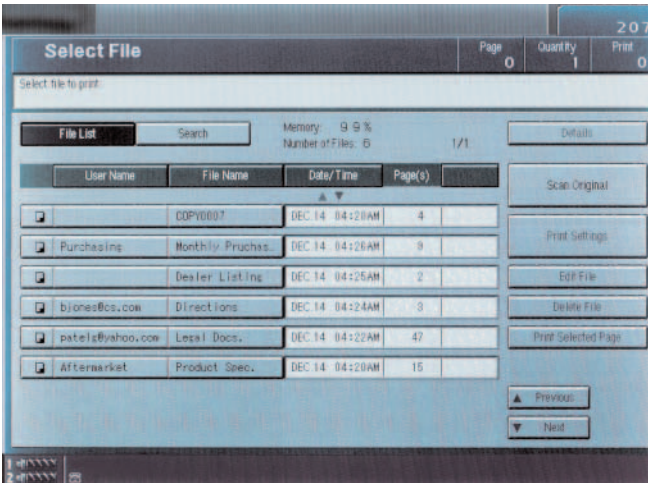
# me Environments.



*A large and intelligently designed Control Panel enables quick access to all of the 4090/40105's advanced capabilities.*



Ensure neatly stacked and separated output with the optional Jogger. And, automatically insert pre-printed covers using the optional Cover Interposer.



*It's easy for walk-up users to locate any file stored in the Document Server.*



The optional 500-sheet Bypass Tray takes up to 12" x 18" paper which enables you to output 11" x 17" full bleed documents.

## Make The Right Connections

To get the most out of your 4090/40105, you've got to get it on your network. And, with a variety of connectivity choices, getting the 4090/40105 on the network couldn't be easier. Go with the standard Fast Ethernet NIC or choose one of the following options: FireWire, Wireless LAN, IEEE 1394 or USB 2.0. Regardless of the connection type, the possibilities are endless...

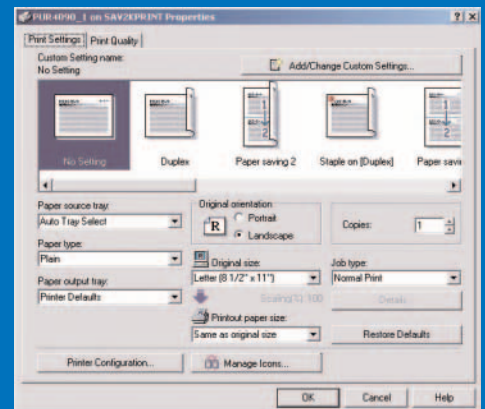
## Production Printing

With support for all major network operating environments – standard PCL and RPCS (Refined Print Command Stream) and optional Adobe PostScript 3 – the 4090/40105 skillfully accommodate a variety of high volume printing demands. And, intelligently designed print drivers

enable desktop access to all of the 4090/40105's advanced publishing and finishing capabilities. You can even create custom output icons based on specific job parameters...for example, create an icon that enables one-click output of an 11" x 17" Saddle Stitched Booklet with Front Cover (RPCS Driver only).

## Network Scanning

Manage hardcopy the smart way with the 4090/40105's extensive network scanning capabilities. Scan documents to e-mail – up to 2,000 programmable destinations, or enter e-mail addresses from the control panel – for an efficient and cost-effective electronic document distribution solution. Scan documents to file and facilitate a productive electronic document collaboration strategy.



Use the RPCS print driver to create custom icons based on specific job requirements. Then, when it's time to print, one click does the job.

**savin**  
4090/40105

# Create Professional Quality Output.



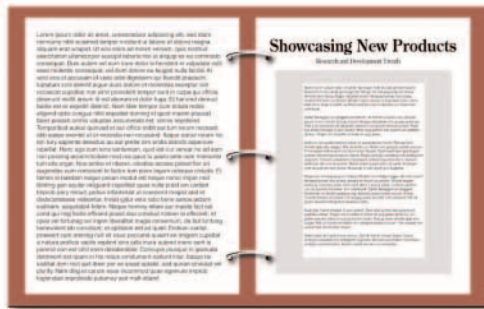
A variety of staple positions



Tabbed pages



The Cover Interposer takes document finishing to a higher level by adding pre-printed, color or cover stock for the ultimate in professional appearance.



2- or 3-hole punch capability



Saddle stitched booklets

## Tandem Printing and Copying

Connect two 4090s, two 40105s, or one 4090 and one 40105 via the Connect Copy option and dramatically enhance output productivity. You can split large jobs between two systems and run them simultaneously, or shift jobs between systems if one system becomes inoperable during a run to ensure job completion. And, most importantly, you'll never have to worry about downtime when a system requires any type of maintenance – just shift production to the other system.

## Finish Right

Regardless of your finishing requirements – from basic to advanced – there's a finishing option for your 4090/40105 that gets the job done. And, the SR840 and SR860 Finishers offer optional, user-selectable 2- and 3-hole punch units, so there is no need for expensive pre-drilled paper.

- Produce sophisticated marketing pieces and high-impact promotional materials in-house with the SR90 Production Bookletmaker, which features high-volume throughput capabilities, exceptionally flat folds and face trimming.
- Or choose the SR860 Saddle Stitch Finisher (4090 only) as an economical alternative to the Production Bookletmaker. Ideal for lower volumes, the SR860 quickly produces finished newsletters, training manuals and booklets.
- Automatically finish documents containing Tabs, Covers or Chapters with the SR840 Finisher.
- Automatically insert pre-printed covers and page inserts – including full color – using the Cover Interposer.

## Project a Professional Image

Perfectly balancing speed, outstanding image quality, sophisticated digital technology, comprehensive connectivity and advanced finishing capabilities, the Savin 4090 and 40105 deliver unparalleled production solutions.

For more information contact your authorized Savin sales location.



# Savin 4090/40105

## COPIER SPECIFICATIONS

|                                |  |
|--------------------------------|--|
| <b>Configuration</b>           | Console  |
| <b>Printing Process</b>        | 4 Way Laser Diode Array, Dry Process (Dual Component)                                    |
| <b>Reading Element</b>         | 4 Channel CCD Array  |
| <b>Copy/Print Resolution</b>   | 1200 x 1200 dpi  |
| <b>Scanning Resolution</b>     | 600 dpi  |
| <b>Gray Scale</b>              | 256 Levels   |
| <b>Standard Memory</b>         | 128 MB (RAM); 40 GB x 2 (HDD)  |
| <b>Document Server</b>         | Storage up to 15,000 Pages   |
| <b>Speed</b>                   |  |
| <b>First Copy</b>              | 3.5/3.2 Seconds (platen)   |
| <b>Continuous Copy Speed</b>   | 90/105 Copies/Minute   |
| <b>Multiple Copy</b>           | Up to 9,999  |
| <b>Original/Copy Size</b>      |  |
| <b>Original Type</b>           | Book/Sheet   |
| <b>Original Size</b>           | Up to 11" x 17"  |
| <b>Copy Size</b>               | 5.5" x 8.5" - 11" x 17"  |
| <b>Copy Type</b>               | Plain Paper, Transparencies, Tabs, Index, Covers   |
| <b>Duplex</b>                  |  |
| <b>Type</b>                    | Four Page Stackless Interleave   |
| <b>Capacity</b>                | Unlimited  |
| <b>Paper Size</b>              | 5.5" x 8.5" - 11" x 17"  |
| <b>Paper Weight</b>            | 20 lb. Bond - 90 lb. Index   |
| <b>Reduction/Enlargement</b>   | 25%, 50%, 65%, 73%, 78%, 85%, 93%, 121%,   |
| <b>Reproduction Ratios</b>     | 129%, 155%, 200%, 400% plus two user programmable ratios                                 |
| <b>Zoom</b>                    | 25% - 400% in 1% increments  |
| <b>User Codes</b>              | 500 copier (eight digits); 500 printer (eight digits)                                    |
| <b>Warm Up Time</b>            | Less Than 360 Seconds  |
| <b>Quantity Indicator</b>      | 1 to 9,999   |
| <b>Power Source</b>            | 240V/60 Hz/20 A  |
| <b>Weight</b>                  | 859.4 lbs.   |
| <b>Dimensions (WxDxH)</b>      | 82.8" x 33.8" x 58.1" (Main Frame)<br>91.3" x 33.8" x 58.1" (Full System)                |
| <b>Paper Supply (Standard)</b> |  |
| <b>Paper Feed</b>              | 1,000 Sheets x 2 Trays (Tandem Tray)<br>500 Sheets x 2 Trays                             |
| <b>Paper Size</b>              | 5.5" x 8.5" - 11" x 17" (12" x 18" with Optional Bypass Tray)                            |
| <b>Paper Weight</b>            | 16 lb. Bond to 90 lb. Index (depending on Tray, 110 lb. Index with Optional Bypass Tray) |
| <b>Total Capacity</b>          | 8,050 Sheets (with Optional LCT and Bypass Tray)   |

## STANDARD ACCESSORIES

|                                       |   |
|---------------------------------------|---|
| <b>Auto Reversing Document Feeder</b> |   |
| <b>Original Feeding Speed</b>         | 80 OPM  |
| <b>Original Size</b>                  | 5.5" x 8.5" to 11" x 17"                                |
| <b>Original Weight</b>                | 16 - 42 lb. Bond (Simplex)<br>16 - 34 lb. Bond (Duplex) |
| <b>Original Stack Capacity</b>        | 100 Sheets  |
| <b>Original Set</b>                   | Face Up   |

## OPTIONAL ACCESSORIES

|                                   |   |
|-----------------------------------|---|
| <b>Large Capacity Tray (RT46)</b> |   |
| <b>Paper Size</b>                 | 5.5" x 8.5" (LEF) - 8.5" x 11"  |
| <b>Paper Capacity</b>             | 1,000 Sheets x 2 (4th & 5th Trays)<br>2,550 Sheets x 1 Tray (6th Tray)                                      |
| <b>Paper Weight</b>               | 16 lb. Bond - 80 lb. Cover, 90 lb. & 110 lb. Index (4th & 5th Trays); 16 lb. Bond - 90 lb. Index (6th Tray) |
| <b>Bypass Type 2105</b>           |   |
| <b>Paper Size</b>                 | 8.5" x 5.5" - 12" x 18"   |
| <b>Paper Capacity</b>             | 300 Sheets - 20 lb. Bond  |
| <b>Paper Weight</b>               | 16 lb. Bond - 80 lb. Cover  |

## DOCUMENT SERVER SPECIFICATIONS

|                                    |   |
|------------------------------------|---|
| <b>Number of Jobs</b>              | Up to 3,000   |
| <b>Number of Pages</b>             | Up to 2,000 per Document  |
| <b>Maximum Capacity</b>            | 15,000 Pages  |
| <b>User ID</b>                     | Max 8 letters (Alphanumeric)  |
| <b>File Name</b>                   | Max 8 letters (Alphanumeric Option)   |
| <b>Password</b>                    | Max 4 digits (Numeric option)   |
| <b>Supported OS</b>                | Win 95/98, Win ME, Win NT 4, Win 2000, Win XP, Macintosh, UNIX  |
| <b>Supported Printer Languages</b> | PCL5e, PCL6 and RPCS; Postscript 3 (Option)   |
| <b>Document Server Features</b>    | Booklet and Magazine Mode, Printing, Sample Sets, Change File Name, Save Printing Conditions, Connect Copy Print, Set Password, Job Preset (10 Jobs), Merge File, Sort By User ID or Time, Search by Document File Name |
| <b>Document Editor Functions</b>   | Change File Name, Delete File, File Insertion, Delete Page, Insert Page, File Merge   |

## FINISHER (SR840)

|                          |  |
|--------------------------|--|
| <b>Type</b>              | Floor Standing   |
| <b>Shift Tray</b>        |  |
| <b>Stack Capacity</b>    | 3,000 Sheets (8.5" x 11", 20 lb. Bond)<br>1,500 Sheets (8.5" x 14" & Larger, 20 lb. Bond w/o Punch)<br>14 lb. Bond - 110 lb. Index |
| <b>Paper Weight</b>      | 100 Sheets (8.5" x 11" or Smaller, 20 lb. Bond)  |
| <b>Staple Capacity</b>   | 50 Sheets (8.5" x 14" or Larger, 20 lb. Bond)<br>8.5" x 11", 8.5" x 14", 11" x 17"   |
| <b>Staple Paper Size</b> | Top, Bottom, Two Staples, Top Slant  |
| <b>Staple Positions</b>  | Optional 2 and 3 Hole (User Selectable)  |
| <b>Hole Punch</b>        |  |
| <b>Proof Tray</b>        |  |
| <b>Paper Size</b>        | 5.5" x 8.5" - 11" x 17"  |
| <b>Paper Weight</b>      | 14 lb. Bond - 110 lb. Index  |
| <b>Stack Capacity</b>    | 500 Sheets (8.5" x 11" & Smaller, 20 lb. Bond)<br>250 Sheets (8.5" x 14" & Larger, 20 lb. Bond)                                    |

## FINISHER (SR860) WITH SADDLE STITCH (4090 ONLY)

|                               |  |
|-------------------------------|--|
| <b>Type</b>                   | Floor Standing   |
| <b>Shift Tray</b>             |  |
| <b>Stack Capacity</b>         | 2,500 Sheets (5.5" x 8.5" - 8.5" x 11", 20 lb. Bond)<br>1,250 Sheets (8.5" x 14" & Larger, 20 lb. Bond)                        |
| <b>Paper Weight</b>           | 14 - 40 lb. Bond, 110 lb. Index  |
| <b>Staple Capacity</b>        | 50 Sheets (8.5" x 11" & Smaller, 20 lb. Bond)<br>30 Sheets (8.5" x 14" & Larger, 20 lb. Bond)<br>30 Sheets (Mixed Paper Sizes) |
| <b>Staple Paper Size</b>      | 8.5" x 11", 8.5" x 14", 11" x 17"  |
| <b>Staple Positions</b>       | Top, Center, Two Staples   |
| <b>Hole Punch</b>             | Optional 2- or 3-Hole User Selectable  |
| <b>Proof Tray</b>             |  |
| <b>Paper Sizes</b>            | 5.5" x 8.5" - 11" x 17"  |
| <b>Paper Weight</b>           | 14 - 40 lb. Bond, 90 lb. Index   |
| <b>Stack Capacity</b>         | 250 Sheets (5.5" x 8.5" - 8.5" x 11")<br>50 Sheets (8.5" x 14" & Larger)   |
| <b>Saddle Stitch Function</b> |  |
| <b>Paper Sizes</b>            | 8.5" x 11" and 11" x 17"   |
| <b>Paper Weight</b>           | 17 - 28 lb. Bond (1 Cover at 14 - 34 lb. Bond)   |
| <b>Staple Capacity</b>        | 15 Sheets  |
| <b>Folding</b>                | Center Folding   |

## PRINTER/SCANNER DIMM SPECIFICATIONS

|                           |   |
|---------------------------|---|
| <b>Print Speed</b>        | 90/105 Pages/Minute   |
| <b>CPU</b>                | Duron 800MHz  |
| <b>Standard Interface</b> | IEEE 1284 100Base-Tx/10 Base T  |
| <b>Optional Interface</b> | IEEE 1394, USB 2.0, Wireless LAN (IEEE 802.11b)   |
| <b>Network Protocol</b>   | TCP/IP, IPX/SPX, Ether Talk, NetBEUI  |
| <b>Memory Capacity</b>    | 384 MB (128 MB standard + 256 MB option required for printer)   |
| <b>Hard Disk Drive</b>    | 80 GB (40 GB x 2) RAID (from mainframe)   |
| <b>Language</b>           | RPCS, PCL5e, PCL6; Optional Adobe PostScript 3  |
| <b>Printer Resolution</b> | RPCS: 200/300/400/600/1200 dpi<br>PCL5e: 300/600 dpi; PCL6: 600/1200 dpi<br>PS: 600/1200 dpi  |
| <b>Supported OS</b>       | Win 95/98, Win ME, Win NT4, Win 2000, Win XP, Macintosh, UNIX   |
| <b>UNIX</b>               | UNIX Filter and install shell are available through web release   |
| <b>Utilities</b>          | SmartNet for Admin, SmartNet for Client, Printer Utility for MAC, IEEE 1394 Utility, USB Printing Support, Agfa Monotype Font Manager 2000, ScanRouter Lite, DeskTopBinder Lite |
| <b>Scan Speed</b>         | 80 OPM  |
| <b>Image Resolution</b>   | Twain: 100-1200 dpi (software enhancement)  |
| <b>Optical Resolution</b> | Scan to email and scan to delivery: Up to 600 dpi (100/150/200/300/400/600 dpi)   |
| <b>File Formats</b>       | PDF, TIFF, JPEG   |
| <b>Destination</b>        | Scan to File, Scan to In Tray, Scan to E-mail   |
| <b>Scan Protocol</b>      | TCP/IP  |

## OTHER OPTIONS

|  |                  |
|--|------------------|
| Connect Copy Kit Type 2105                     | GlobalScan       |
| SR90 Production Booklet Maker                  | GBC Stream Punch |
| 11" x 17" Tray Kit Type 2105                   |                  |
| Cover Interposer Type 1075                     |                  |
| Output Jogger Unit Type 1075 (for SR840 Only)  |                  |
| Bypass Tray Type 2105                          |                  |
| Document Server File Format Converter Software |                  |
| Print Controller Type 2105                     |                  |
| Postscript 3 Kit                               |                  |
| T/R Systems MicroPress                         |                  |
| USB 2.0  |                  |
| IEEE 1394                                      |                  |
| Wireless LAN IEEE 802.11b                      |                  |
| Fiery EB-105ex Controller                      |                  |

**savin**

Savin Corporation Stamford, Connecticut 06904 ©2003 Savin Corporation. SAVIN® is a registered trademark of Savin Corporation. All other trademarks are the property of their respective owners. Product specifications subject to change without notice. Printed in U.S.A. (S1773) 50M 03/03

