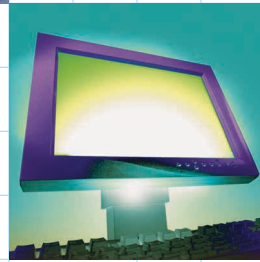
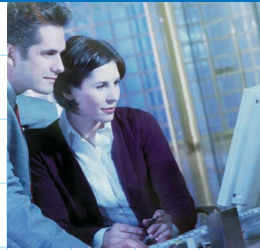


3460DNP

> DIGITAL DUPLICATOR

Outstanding
imaging
for **all** your
print production
demands



3460DNP



savin®

Ultra Professional Speed,

No matter how large or complex the job, what the type, weight or size of paper (up to 12.5" x 17.5"), the Savin 3460DNP Digital Duplicator is today's advanced, high-performance production solution for print-for-pay organizations, commercial printers, in-house corporate reprographics departments, manufacturing and facilities management firms alike. The 3460DNP blazes through documents at a super-fast speed of 120 pages per minute, while delivering 600 dpi image quality, reliably tight registration, and maximum paper handling. Embedded PostScript® connectivity rounds out the package to maximize your productivity. Fast, easy setup means the 3460DNP is already in production while most presses are still being prepared to run. Plus, it's easy on your workplace, utilizing environmentally-friendly consumables that assure virtual white-glove operation.



Unmatched Image Quality For Crystal-Clear Documents

The Savin 3460DNP's advanced engineering innovations allow you to say goodbye to inconsistent images and messy inks.

- **True 600 dpi Resolution** Sharp resolution is what you can expect when you work with this production system. *True 600 dpi resolution* in the scanning and printing process combine with *256 grayscale scanning* for precise edges, crystal clear lines, plus text and halftone images that will satisfy even the most critical eye.

- **An Advanced Inking Solution** The 3460DNP's new Ink Delivery System maximizes quality with improved ink control. Images are not only sharper than ever, but are free of smudging and other imperfections print after print. Improved control also results in reduced ink consumption for more economical printing, and speedy drying time with absolutely no ink set-off.

- **Newly Refined After-Market Supplies** Environmentally-conscious high-density inks are available in black and a rainbow of brilliant colors. Super-fine masters mean that ink coverage is more solidly filled and evenly distributed, with a higher pigment concentration.

- **Customized Color Selection** Whether you need to match a specific logo or headline color or have other specialized needs, selecting the perfect shade is a snap with *Savin's Digital Duplicator Custom Color Program*. Now you can custom order ink in any PMS® color imaginable and have it delivered right to your door!



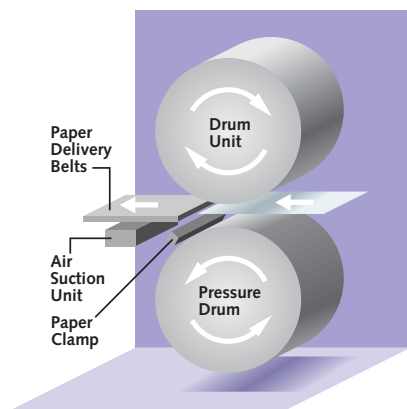
3460DNP standard colors. Custom PMS matching inks are also available.

Versatility & Quality, From Im

- **Precision Image Definition** Image control is at your fingertips. *Tint Mode* lets you adjust the shade of every ink color you use. *Letter/Photo Auto Separation, Letter & Photo Modes* permit optimal document reproduction when combining text and pasted photographs. *Pencil Mode* ensures clear duplication of any lightly-toned original.

Relentless Reliability, Seamless Functionality

A high-volume production environment demands the advanced-performance features of the Savin 3460DNP Digital Duplicator. The 3460DNP always delivers reliable and premium output with each and every throughput pass.



Dual-Cylinder System & Paper Clamping

- **Dual-Cylinder System & Paper Clamping** Savin's offset-quality cylinder provides a larger paper press point for more solid fill. As paper is fed, the Paper Clamp Mechanism holds it firmly in place while being inked, for greater imprint accuracy, superior registration, and even quieter operation. Friction pad technology eliminates double feeding, while an enhanced air suction method allows smooth intake of all stock thicknesses with no paper wrapping.

- An all-new **Double Feed Detector** optimizes printing reliability and provides professional, offset-like output thanks to an intuitive built-in sensor. The sensor, which can be adjusted, emits light to continually calculate brightness levels as compared to previously-fed paper. This greatly minimizes misfeeds, double-feeds, missing pages, as well as time required to check your output.

- The 3460DNP streamlines processing onto **Bond, Index, even envelope stocks**. Plus, it enables you to run select existing pre-printed four-color as well as foil-stamped and embossed /debossed originals such as letterhead, because there is absolutely no heating element inside...a major difference and benefit over all toner-based copiers. Because of the lack of heating element, the 3460DNP also dramatically lowers energy consumption as compared to high-speed copiers, using *as little as 4%* of the power of any such system.

- A **single master cylinder** allows for a self-loading master process, with a Master Disposal System that is fully enclosed. The machine alerts you when it's full — you simply slide out the cartridge, discard the old masters and replace.

Productivity Possibilities Are Endless With...

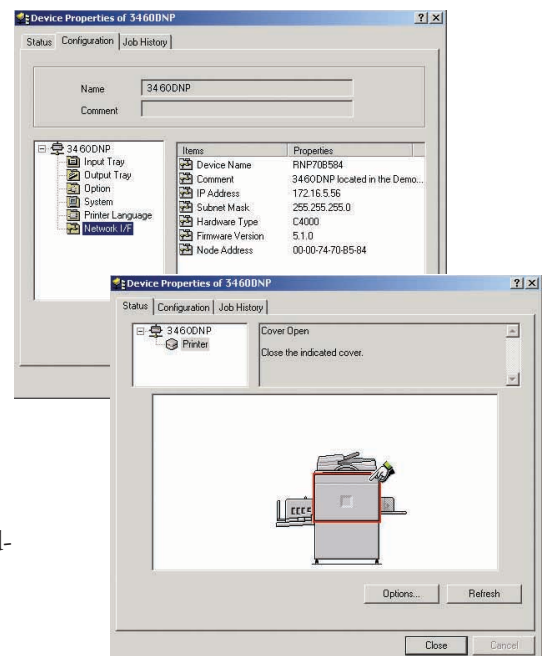
- **Seamless connectivity** that lets you print from just about any connected operating system from either your stand-alone or networked computer with the optional true **PostScript® 3 embedded Type 80 Controller** interface. Users gain control and ripping performance, along with real-time access to information on paper settings, misfeed alerts, job history, and security features. Even workflow can be managed with other

Savin digital products on your local area network (LAN) with our built-in printer management solution, **SmartNetMonitor**.

...**High-performance features** that accommodate your professional workload:

- Conveniently **scan and store up to eight originals** for instant retrieval and printing. The Savin 3460DNP also auto-rotates scanned images to match the direction of blank paper in the feed trays, and automatically scans and rotates an 11" x 17" original that's reduced to letter size.

- The 3460DNP recognizes your original's size in the **Automatic Document Feeder** and cuts the master material to the size most efficient, saving up to 33% of the cost of masters.



View system configuration, system status, paper options and more from the desktop with SmartNetMonitor.

Image to Output



Print in either standard or custom colors on all stocks from bond to index in a full range of sizes.

- The system also detects original size to **automatically enlarge or reduce** the image to fit the blank paper size in feed trays. Plus, two originals can be combined two-up, or a single-original placed four-up without requiring additional editing.
- Multiple production output is efficiently organized with the **built-in Job Separator**, which mechanically separates print jobs by offsetting the top sheet of each previous job.
- When you require copying from **bound originals**, up to 11" x 17", the 3460DNP makes it easy with ingenious depth-of-field technology for the clearest copies by eliminating secondary shadowing.
- Productivity is heightened with user-friendly capabilities like **User Codes** for tracking up to 20 different accounts,

9 Preset Job Settings that give instant access to frequently-run jobs like forms, plus **Stamping, Overlay** and **Security Modes**.

- When not in use, the 3460DNP automatically switches into **Energy Saver Mode**, reducing power consumption to 85 percent of normal operation.

The high-volume, super-productive Savin 3460DNP Digital Duplicator... The advanced solution for the document production needs of today's print on-demand environments.

For more information or a product demonstration, contact your authorized Savin sales location.



Economical one-pass, two color duplicator printing with the Savin TC-II Digital Production Printer.

High-volume print productivity is at its peak with this unique solution. The world's first two-color, single-pass duplicator, the TC-II — which works hand in hand with the 3460DNP — contains two inline print cylinder chambers that accept the 3460DNP's color cylinders. Because it has no scanner or master-making capabilities, it relies on the 3460DNP to create two separate masters that transfer to the TC-II for increased printing productivity. Super tight registration on two-color output and a 120-page-per-minute output speed saves time and labor costs, especially where your most critical multi-color jobs are concerned. Now it's possible to simultaneously run two jobs at an incredible 240 pages per minute, so projects like multi-part mailers can be completed in no time.



savin®
3460DNP



The 3460DNP has a single master cylinder for a self-loading master process, and ink cartridges that load and remove quickly and neatly. The Master Disposal System is fully enclosed and the 3460DNP alerts you when it's full — just slide out the cartridge, discard the used masters and replace.



The Automatic Document Feeder ensures that the master is cut to the most efficient size. This saves up to 33% of the cost of masters without using the optional short drum!



All operation keys are located on the 3460DNP's control panel which prompts the operator through the selection of features while indicators keep the user informed of the system's operational status.

FEATURES

- > true 600 dpi resolution
- > fast 120 page per minute speed
- > 256 grayscale scanning
- > new high-density inks and super-refined masters
- > standard and custom PMS color inks available
- > SmartNetMonitor software provides real-time information



Connectivity & Color Options



Embedded Type 80 Print Controller offering total solution connectivity.



UC5 External or UC5e Embedded Print Controller for use with text documents.



UC6 External Print Controller offering a full range of capabilities.



Integrated, hot-swappable master color cylinders.



Savin 3460DNP

- > 120-page/minute speed
- > superior 600 dpi resolution
- > handles a variety of papers
- > standard and custom inks

SPECIFICATIONS

Configuration	Desktop Book Copying
Master Processing	Fully integrated digital duplicator
Pixel Density	600 dpi
Scan Resolution	600 dpi
Print Resolution	600 dpi
Printing Process	Dual cylinder system, paper clamp system
Image Scanning	CCD with lens
Paper Feed System	Paper roller and clamp mechanism
Reduction Ratios	93%, 77%, 74%, 65%
Enlargement Ratios	155%, 129%, 121%
Zoom	50% – 200% in 1% increments
Image Mode	Letter, Photo, Letter/Photo Auto Separation, Tint
Original Sizes	Max: 12" x 17" (Platen) Min: 4.1" x 5.0", Max: 11.6" x 34" (ADF)
Paper Sizes	2.8" x 5.8" to 12.8" x 17.6"
Image Area	11.4" x 16.5"
Paper Weights	12.5 lb. Bond to 110 lb. Index
Print Speeds	60, 75, 90, 105 or 120 ppm
Master Process Time	25 seconds
Paper Feed Tray Capacity	1,000 sheets
Paper Delivery Table Capacity	1,000 sheets
Optional ADF Original Capacity	50 sheets
Power Source	120V, 60Hz, 2.4A
Power Consumption	Max. 260 W
Print Counter	9,999,999
Master Counter	999,999
Noise Emission	58–64 dB
Dimensions (WxDxH)	56.5" x 27.5" x 23.0"
Weight	231 lbs.
Masters	255 L-size sheets per roll 410 S-size sheets per roll
Master Run Length	More than 2,000 impressions
Master Disposal Capacity	65 to 100

STANDARD FEATURES

No-Waste Confidential Mode
 No-Waste Quality Start Mode
 Ink Blade Distribution Control
 Electronic Vertical/Lateral Registration
 Digitally Controlled PF Settings
 8-Page Storage and Recall Memory
 Dual PF Friction Pad System
 Skip Feed Mode
 User Code Audit Mode
 Economy Mode
 Image Overlay
 Tint Mode
 Directional Magnification
 Auto Image Rotation
 Two Up Mode
 Multi-Copy Modes (2, 4, 8, 16 in 1)
 Auto Separation, Line/Photo Mode
 Auto Paper Size Detection
 Auto Original Size Detection
 Auto Background Correction
 User Program Mode
 Photo Mode
 Editing
 Class Mode (9 grades x 18 classes memory)
 Status Sheet Printout
 SP Mode
 "L" & "S" Auto-Cut Master
 Shadow/Edges/Center Erase
 Stamping Mode
 Tapeless Job Separator
 Auto Contrast Control
 I/O Service Mode

OPTIONAL EQUIPMENT

DF-85 50-Page ADF
 TC-II Digital Production Printer
 Base Cabinet
 Platen Cover
 Color Cylinders
 3460DNP Ink Choices (Standard and custom PMS)
 Type 80 Print Controller, UC6 Print Controller, UC5 or UC5e Print Controller
 Type 85 Editing Board

NOTE: Additional Interface Board required when connecting the 3460DNP with UC5, UC5e and UC6.



Savin Corporation Stamford, Connecticut 06904 ©2002 Savin Corporation. SAVIN® is a registered trademark of Savin Corporation. All other trademarks are the property of their respective owners. Savin reserves the right to modify any standard ink choices without notice. Product specifications subject to change without notice. Printed in U.S.A. (S1722) 35M 12/02

For more information,
 contact your authorized
 Savin sales location.

